



# Sideloading an APP

1

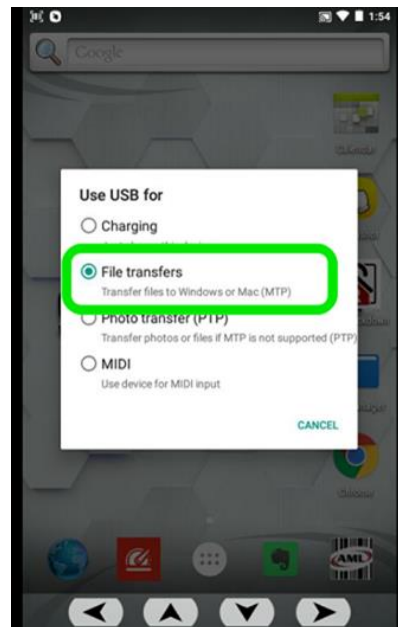
Download the APK file for the app you are wanting to install onto your PC.

*\*Note: in most cases you can download the APK directly from the software provider's site. There are also several APK download sites that make these APKs available. For example, [www.apkmirror.com](http://www.apkmirror.com) and [www.apkpure.com](http://www.apkpure.com).*

2

Place the Scepter or Solo in the charging cradle (connected via USB to PC) and enable **File transfer** mode:

- Swipe downward from top of screen.
- Tap **USB for charging...** then **File transfers**.

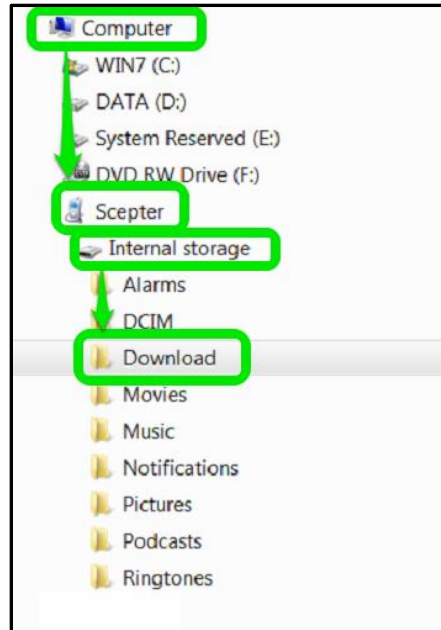


### 3

Open *Windows File Explorer* on the PC.

(\*note: this can also be performed using a thumb drive inserted into the charging cradle)

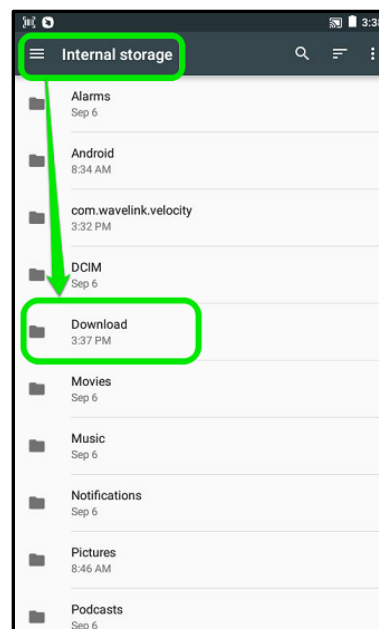
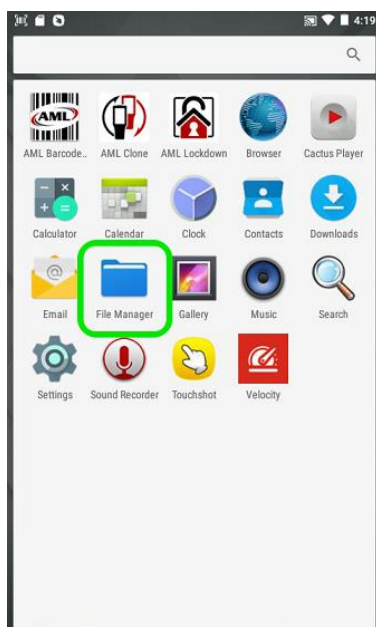
Copy your apk file(s) to: **Scepter > Internal storage > Download.**



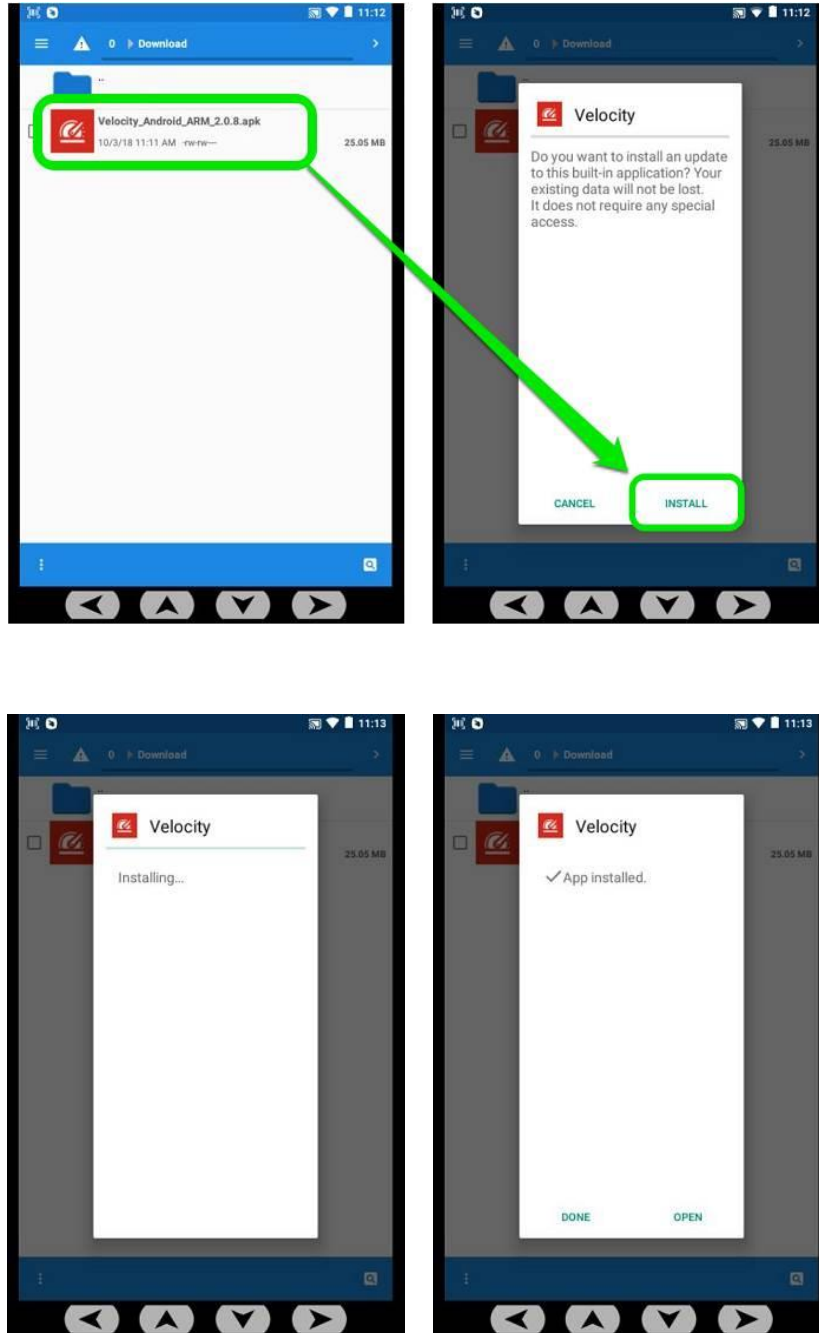
### 4

Install the APK on the Scepter or Solo using the *File Manager* app:

- Tap the *File Manager* app to open
- Navigate to the **Download** folder



Tap on the APK file and choose **Install**.



*\*Note: Once you have a unit configured the way you want it, the AML Clone app will allow you to make a clone file for your device (which will copy/clone all settings, applications, files, etc.) to be deployed onto your other devices. The AML Clone app is not just a backup and restore function, but a true cloning utility. The encrypted clone file can then be used to quickly image other devices with all the same applications, settings and credentials. See \*AML Cloning App\* document.*