



# AML Clone Utility (USB Drive)

1.

Insert thumb drive into the **Device port** on back of the charging cradle.



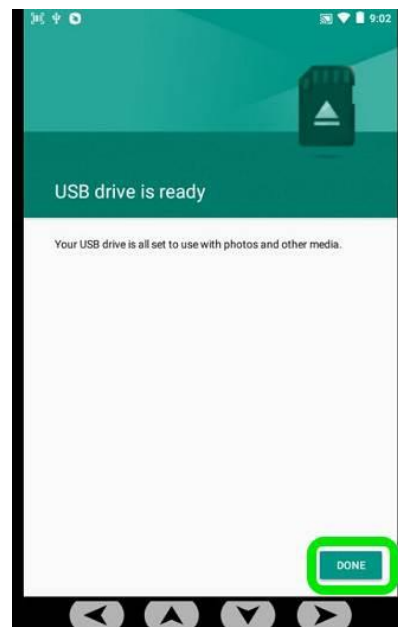
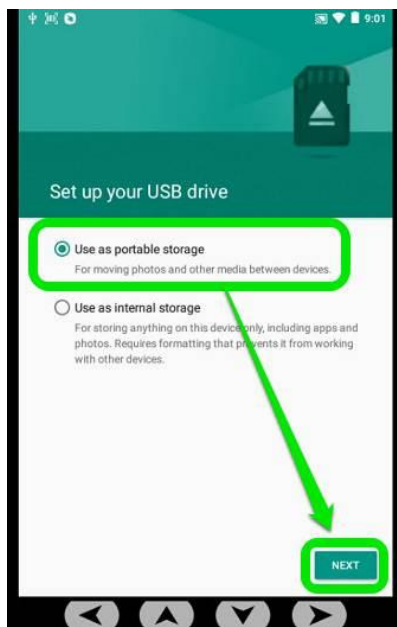
2.

Swipe down from top of screen on the Scepter or Solo.



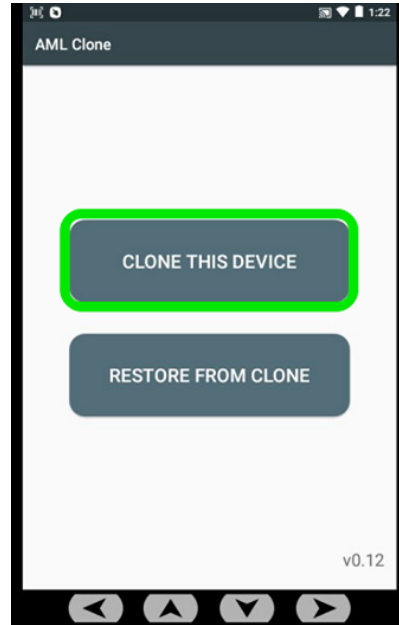
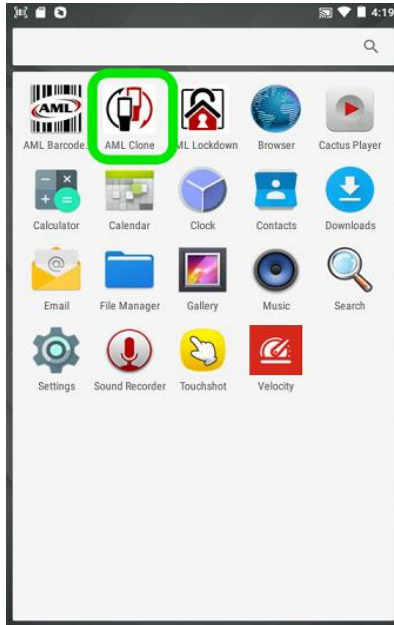
3.

Tap **USB drive** → **Use as portable storage** → **NEXT** → **DONE**



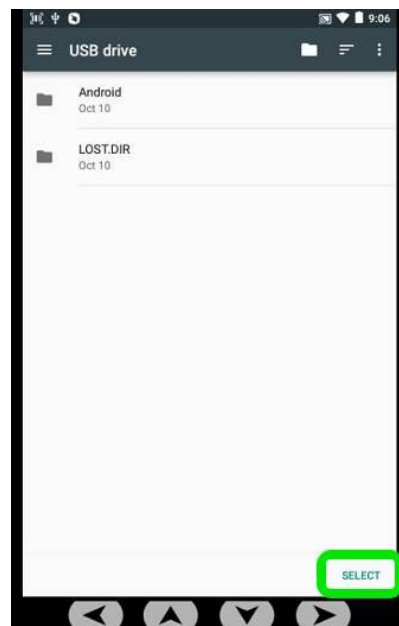
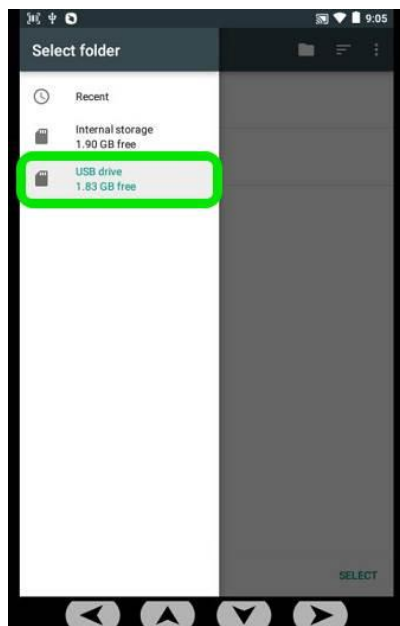
## 4. Create the Clone File

- Open the *AML Clone* app.
- Tap **CLONE THIS DEVICE**:



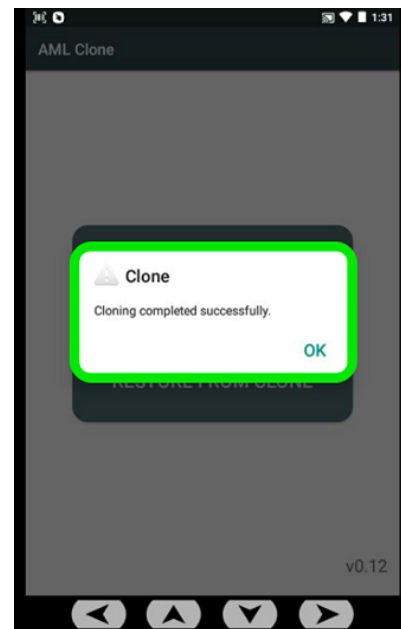
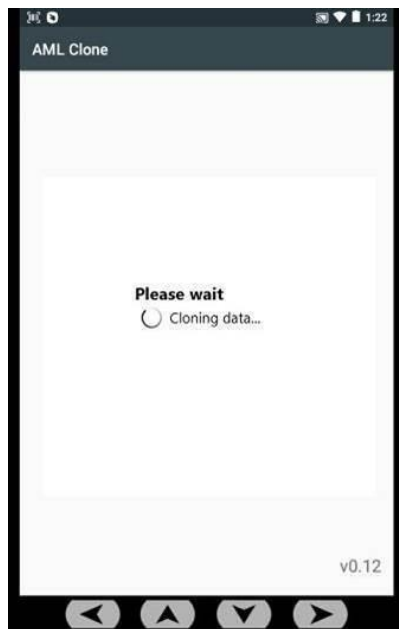
## 5.

Tap **USB drive** → **SELECT**



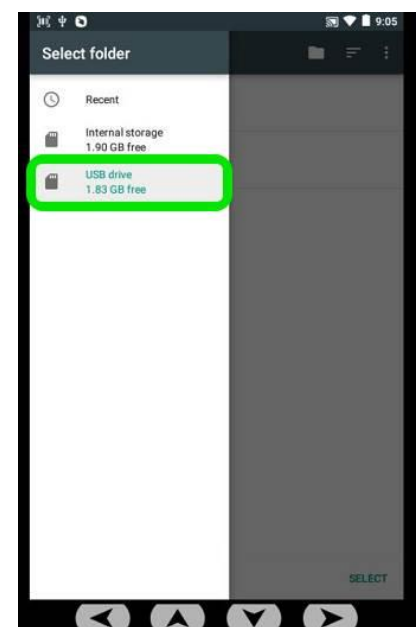
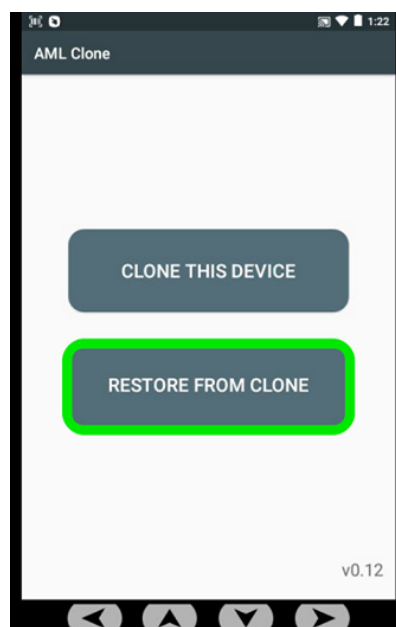
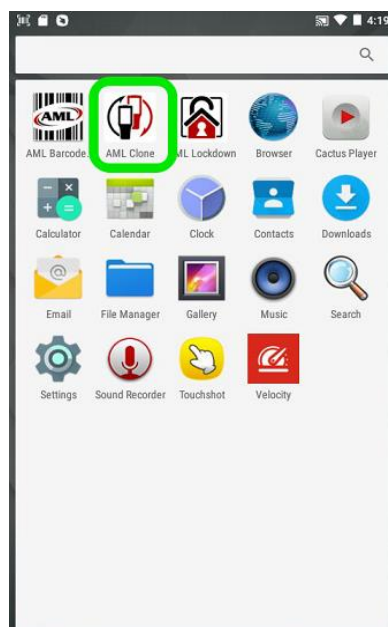
## 6.

Wait for cloning process to complete.



## 7. Cloning Another Scepter or Solo

- Place another Scepter or Solo in the charging cradle and open **AML Clone**.
- Choose **RESTORE FROM CLONE**.
- Tap **USB drive**.



## 8.

Tap the *.AMLClose* file, then **YES** to begin cloning.

*(Note: the device will reboot upon completion).*

