



Enterprise Mobile Computer Quick Reference Guide



7361 Airport Freeway
Richland Hills, Texas 76118
800-648-4452
www.amltd.com

Specifications

Operating System	Android 13+
Processor	Qualcomm QCS6490, Octa Core, 2.7 GHz
Memory	4GB RAM, 64GB Flash
Display	4.0" 800 x 480 IPS LCD
Keypad	47-key, 58-key Tactile
Audio	Built-in Speaker, Microphone, Audio Jack.
WLAN	802.11ax, Wi-Fi 6E
WPAN	BLE 5.2 Dual Mode
Main Battery	24.3 Watt-hour Li-Ion
Barcode Scanning	2D Imager, 2D Near/Far Imager
Physical Size (Handle)	8.5" x 3.1" x 6.1" (21.6cm x 7.9cm x 15.5cm)
Physical Size (No Handle)	8.5" x 3.1" x 1.8" (21.6cm x 7.9cm x 4.5cm)
Weight (Handle)	20.6 ounces (584 grams)
Weight (No Handle)	17.6 ounces (499 grams)
Drop Specification	6' to concrete
Tumble Specification	1,000 x 1-meter tumbles
Environmental Sealing	IP65
Operating Temperature	-4° to 122° F (-20° to 50° C)
Other Features/Options	Integrated flashlight with dedicated switch. Camera, 13MP (Optional)
Made in USA	YES

AML reserves the right to make changes in specifications and other information contained in this document without prior notice, and the reader should in all cases consult with AML to determine whether any such changes have been made. The information in this publication does not represent a commitment on the part of AML. AML shall not be liable for technical or editorial errors or omissions contained herein; nor for incidental or consequential damages resulting from the furnishing, performance, or use of this material. This document contains proprietary information which is protected by copyright. All rights are reserved. No part of this document may be photocopied, reproduced, or translated into another language without the prior written consent of AML.





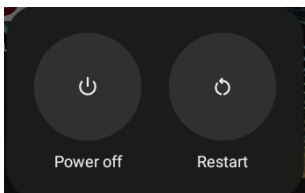
Speaker

Power Button

Press and release the power button to turn the device on.

Pressing the power button and releasing quickly, will turn off the display and put the device into sleep mode.

To turn the device off, press and hold the power button until a pop-up is displayed with the options to “Power off” or “Restart”.

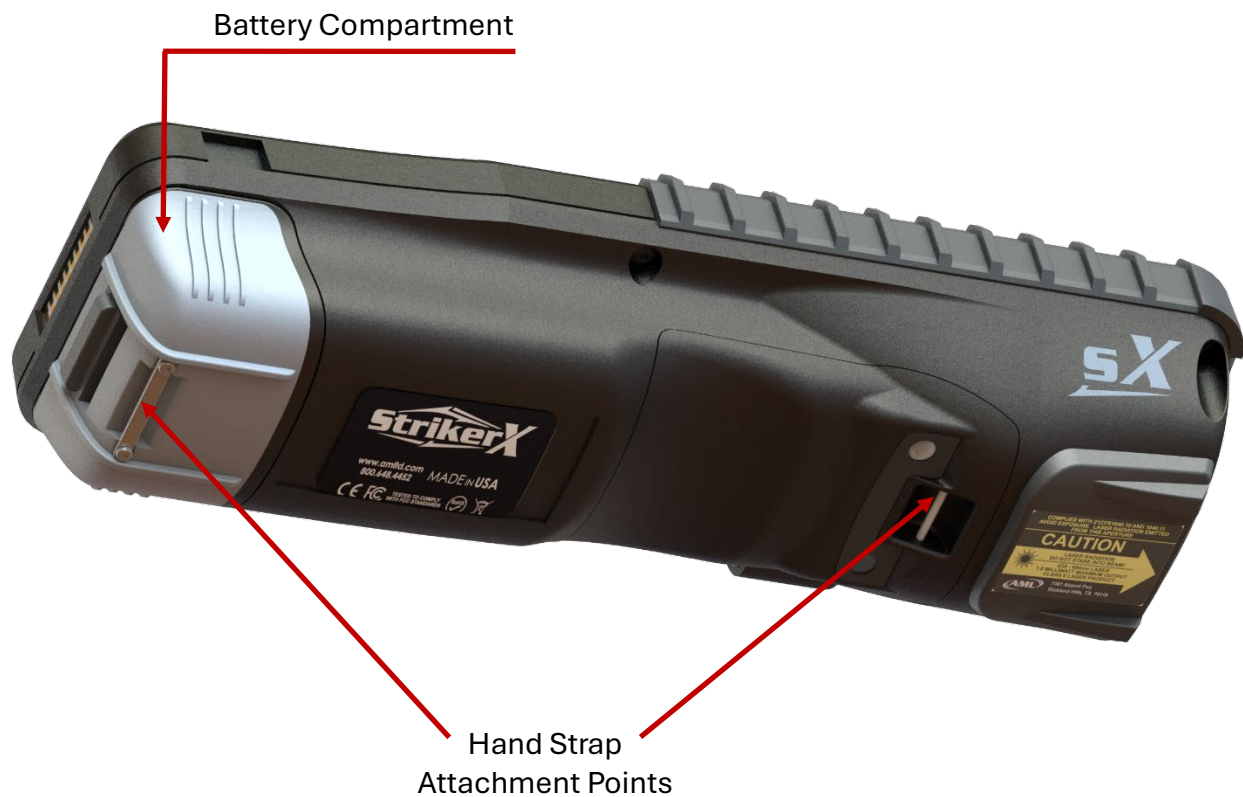


Barcode Scanner Button

Microphones

Non-Handle Version

The LED flashlight may be activated by pressing the Function Key (**Fn**) and then the ENTER key. Repeat the procedure to turn it off.

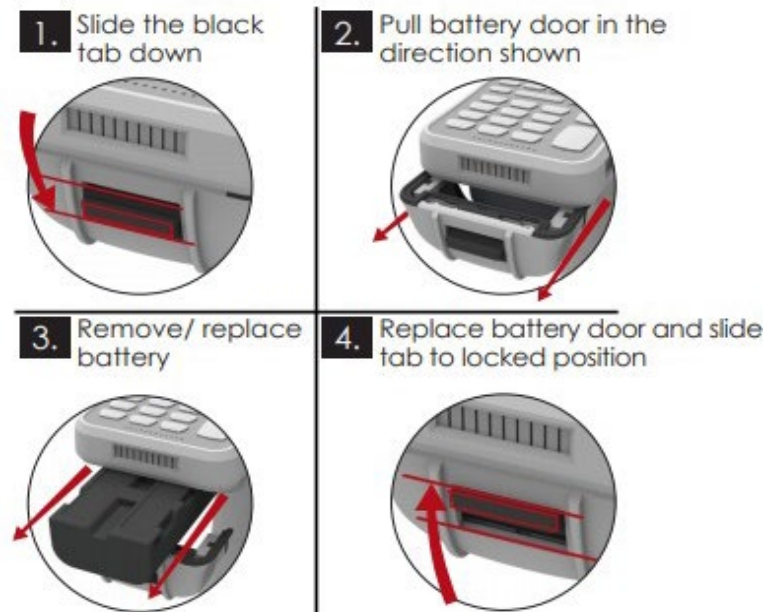


Handle Version



Installing/Replacing the Battery

Please note that the only battery to be used with your StrikerX is AML Part No. 180-7800. Using any other battery will void any warranty or maintenance plan and can result in malfunction, over- heating, or risk of fire.



Charging the StrikerX



ACC-7725 Cradle

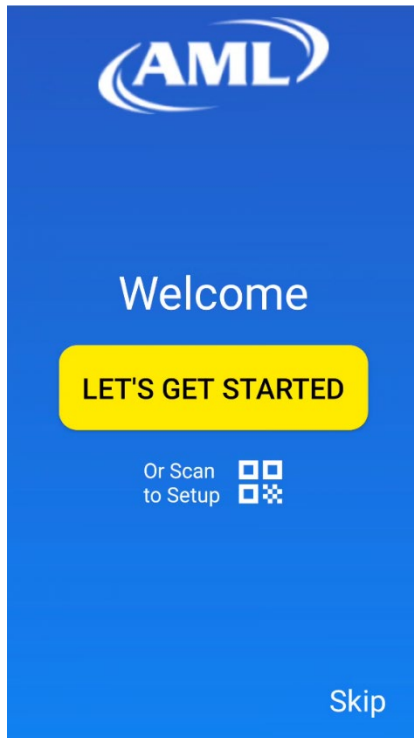
First, make sure the charging cradle is powered on using the supplied 12VDC power supply. Using any other power source may damage the cradle. Once powered up, a **RED** LED on the left side of the indicator panel will illuminate.

To charge the StrikerX, set it into the cradle and ensure that it is seated properly. If the battery is not fully charged, a **RED** LED in the middle of the indicator panel will illuminate. Leave the StrikerX in the charging cradle until this LED turns **GREEN**.

Install an optional spare battery, into the spare battery compartment on the back side of the cradle. The LED on the far right of the indicator panel will illuminate **RED** while charging and turn **GREEN** when fully charged.

Using the Set-Up Wizard

When the StrikerX is powered on for the first time, users will see this screen for the Set-Up Wizard.



Pressing the **Let's Get Started** button will walk you through setting up your Wi-Fi connection and setting the correct date and time on the device.

Alternatively, you can simply select the **Skip** option and then use the Settings icon on the desktop to configure the Wi-Fi and other settings at your leisure.

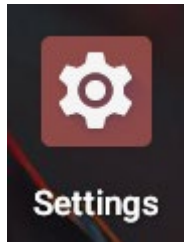
You also have the option to scan barcodes that have been created specifically to configure your device.

One such example would be to scan a barcode generated by AML Setup Console for use by the AML Setup app running on the device. Scanning the barcode configures the device based on parameters established by an Admin, including network settings, barcode service settings, and user restrictions.

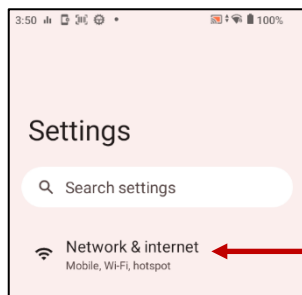
Another example would be to scan a barcode generated by AML Device Manager that would configure the Wi-Fi settings and enroll it into AML Device Manager as well. At that point, configuration settings can be pushed down to the device from ADM.

Lastly, you can scan a managed provision QR code generated by third-party Mobile Device Management (MDM) applications like Microsoft Intune and SOTI. Scan the barcode and follow the instructions as they appear on the screen.

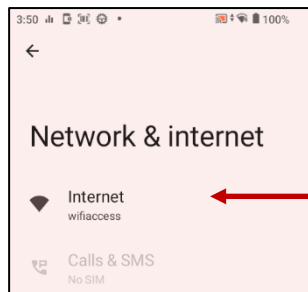
Setting up a Wi-Fi Connection



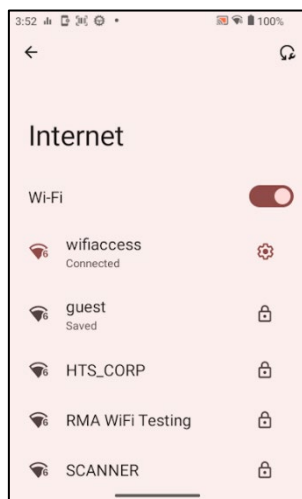
Locate and select the **Settings** icon on the home screen.



In the Settings menu, select **Network & Internet**.



Select **Internet**.



Make sure the Wi-Fi button is toggled to the ON position.

Select a network and then follow the prompts to enter the proper credentials to allow access.

Power Management Tips

Follow these simple rules to ensure that the StrikerX performs at maximum efficiency for the longest possible duration.

Know the difference between “sleep mode” and “power off”. When the power button is pressed and released, the display will dim, and the StrikerX will go into low-power “sleep” mode. The device will continue to consume battery power, but at a drastically reduced rate. But if left overnight, the user will notice they have less battery capacity when they wake the device than it did when they shut it down. If the StrikerX is going to be left idle for any significant period of time, it is better to completely power down the device by holding the power button down until a prompt appears that will give you the option to “Power off” or “Restart”. Confirm a true power-down by tapping the “Power off” button.

When “hot swapping” the main battery, ensure that a new battery is installed within 10 minutes. If it sits idle for a while before a new battery is installed, ensure the device is properly TURNED OFF. When the main battery is removed, the display will immediately go dark which might lead the user to believe the device has turned off. In fact, it has gone into “low power” mode and is now running off of the internal backup battery. The longer the device remains in this state, the more the backup battery is depleted. Once the backup battery is depleted, the StrikerX powers down. When a main battery is inserted into a StrikerX with a depleted back-up battery, it will power the device so the user can return to work, but some of its power is used to recharge the backup battery. For the first several minutes it will recharge the back-up battery at an accelerated rate to get it quickly charged in case it is needed again soon. The backup battery will typically be fully recharged within the first two hours. During this period when the backup battery is recharging, users may notice the main battery depleting more rapidly than normal, resulting in overall reduced battery life for that charge session. To avoid this, minimize the time the device is in low power mode without a main battery. Install a fresh main battery quickly when hot- swapping batteries. If a device has been in low-power mode, without a main battery for 10 minutes or more,

Battery Care

install a fresh battery then set the StrikerX in a cradle for a half-hour or longer so that the backup battery can re-charge without taxing the main battery.

Adequate battery life is crucial to the performance of mobile computing devices. Here are some tips for prolonging the life of your Striker batteries:

- Charging your batteries at room temperature is recommended. Charging at lower temperatures will require a longer charge time and charging below freezing can permanently damage battery cells, making them more sensitive to failure when exposed to vibration and other stresses. Charging at elevated temperatures (above 40°C / 104°F) is also not recommended as it can create a possible thermal runaway condition that can also permanently damage a battery cell.
- Avoid discharging the batteries completely. The shorter the discharge, the longer the battery lasts. There is no issue with “memory” and the battery does not need periodic full discharge cycles to prolong life.
- Avoid storing batteries with a full charge. If you purchase batteries to be used as replacements in the future, avoid the urge to fully charge them and then set them on the shelf. Instead, place them in a cool, dry place and then wait to charge them fully when you’re ready to use them. Ideally, Li-ion batteries should be charged at 40 percent for long-term storage. The worst possible scenario is a fully charged battery stored at an elevated temperature.
- Date-stamp your batteries when you receive them. If you use the “500-cycle rule” – meaning that your battery should last about 500 charges – you can calculate about how long your batteries are expected to work at 80 to 100% of full capacity. It’s important to note that Lithium-Ion batteries do just simply age, regardless of charge cycles. If a battery is five years old, even if it’s only used once a month, it will still not perform at full capacity.

Sanitizing Your StrikerX

The best way to clean and sanitize your AML mobile computer or kiosk is to use a diluted solution of three-parts water and one-part rubbing alcohol. Rubbing alcohol is a diluted form of isopropyl alcohol. It typically contains 70% isopropyl alcohol with the balance consisting of other denaturants. Do not use full-strength isopropyl alcohol. Apply the solution to a soft cloth first, and then wipe all surfaces of the device.



Accessories



ACC-7725 Charging Cradle

Charges one StrikerX and one spare battery.



ACC-7736 Mobile Charging Cradle

Designed for vehicle mount applications
Charges one StrikerX and one spare battery.



ACC-7037 Four Position Battery Charger

Charges four batteries simultaneously.



ACC-7715-PS Inline Charger

Charges one StrikerX.



ACC-7735 Four-Position Device Charger

Charges four StrikerX simultaneously.

Warranty Protection and Technical Support



Do I have the coverage I need? **UPGRADE YOUR WARRANTY TODAY!**

Extended Warranty Plus:

- Covers the failure of internal components as a result of normal wear and tear.
- Covers firmware upgrades.
- Four (4) business-day turnaround, excluding time in transit, when RMA number is properly marked on the outside of the box.
- Standard return freight (UPS ground) included.



The **Extended Warranty Plus** also includes coverage for failure of external components regardless of fault.*

*Some Exclusions Apply.

Contact AML for further details

www.amltd.com **800.648.4452**



If your StrikerX mobile computer is in need of repairs, you may request an RMA number (Return Material Authorization) by calling **877-842-3990**, between 8:00 am and 5:00 pm, (CST) Monday-Friday.

You may also request an RMA number online at:

<https://www.amltd.com/RMA-Request>

AML Technical Support Team

AML technical phone support is toll-free and pain-free. Speak with a US-based AML employee trained to answer your question and do everything possible to resolve any issues that might arise.

877-842-3990 Mon-Fri 8:00 to 5:00 CST

Product Registration

In order to **help facilitate support inquiries** please register your product.

You can register your product(s) online at

www.amltd.com/register

Laser Devices

Class 2 laser scanners use a low power, visible light diode. As with any very bright light source, such as the sun, the user should avoid staring directly into the light beam. Momentary exposure to a Class 2 laser is not known to be harmful.

The following statement is required to comply with US and international regulations.



CAUTION

Use of controls, adjustments, or the performance of procedures other than those specified herein may result in hazardous laser light exposure.

Label Reads

COMPLIES WITH 21CFR1040.10 AND 1040.11
AVOID EXPOSURE. LASER RADIATION EMITTED FROM THIS APERTURE
CAUTION
LASER RADIATION
DO NOT STARE INTO BEAM!
630-680nm LASER
1.0 MILLIWATT MAXIMUM OUTPUT
CLASS II LASER PRODUCT

LED Devices

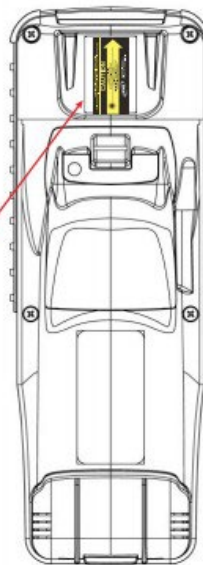
For LED devices which have been evaluated to IEC 62471 and comply with the Exempt Risk Group, no product labeling requirements apply.

However, the following statement is required to comply with US and international regulations:

LED Compliance Statement:

Classified as 'EXEMPT RISK GROUP' according to IEC 62471:2006 and EN 62471:2008.

NO USER SERVICEABLE PARTS



TESTED TO COMPLY
WITH FCC STANDARDS



Safety NOM/NYCE-NOM-019-SCFI-1998
Safety of data processing equipment



7361 Airport Freeway
Richland Hills, Texas 76118
800-648-4452
www.amltd.com



