



AML Clone Utility (USB Drive)

1.

Insert thumb drive into the **Device port** on back of the charging cradle.



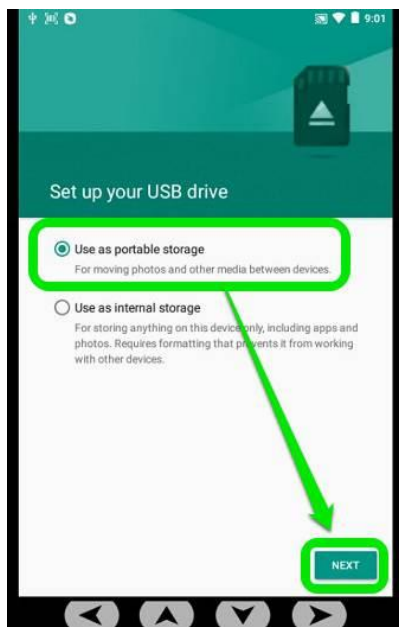
2.

Swipe down from top of screen on the Scepter.



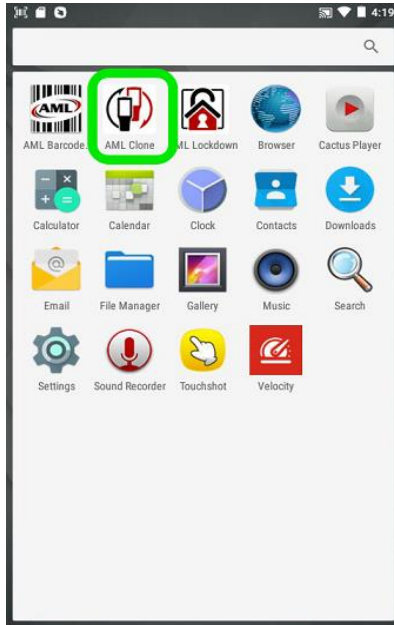
3.

Tap **USB drive** → **Use as portable storage** → **NEXT** → **DONE**



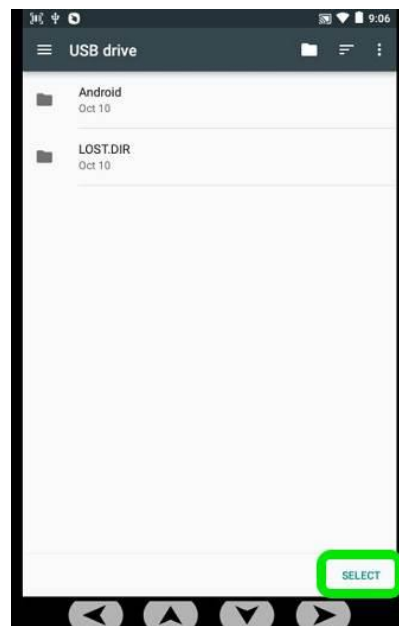
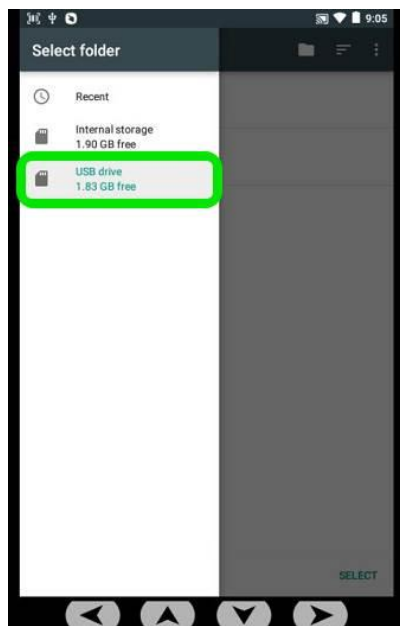
4. Create the Clone File

- Open the *AML Clone* app.
- Tap **CLONE THIS DEVICE**:



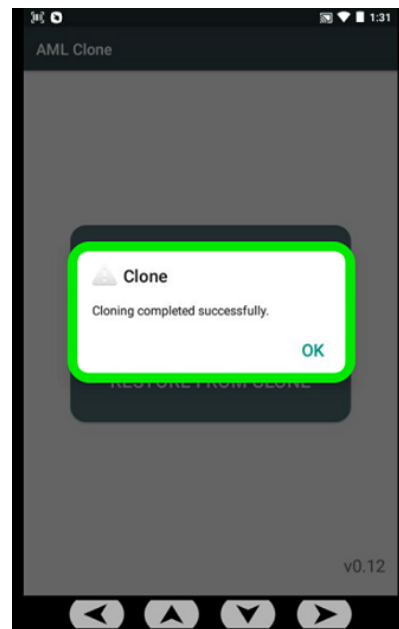
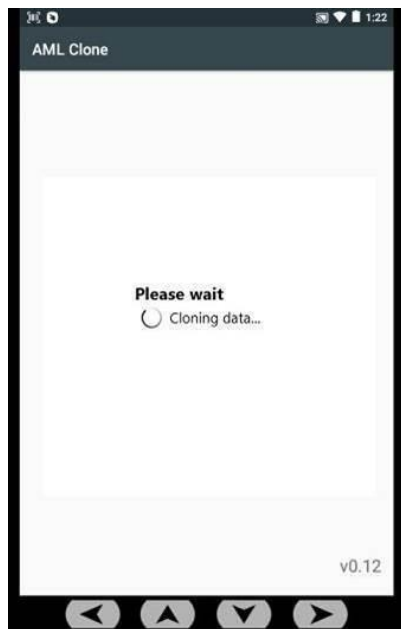
5.

Tap **USB drive** → **SELECT**



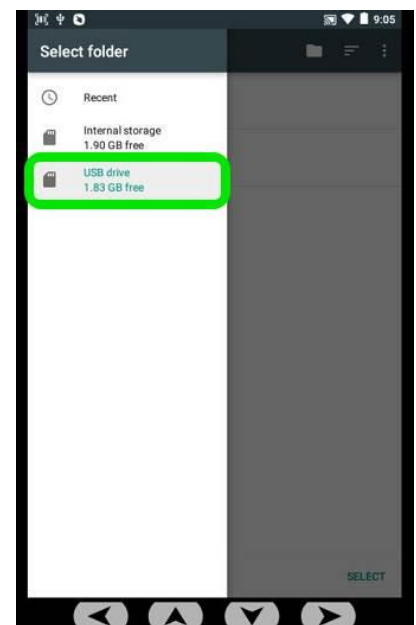
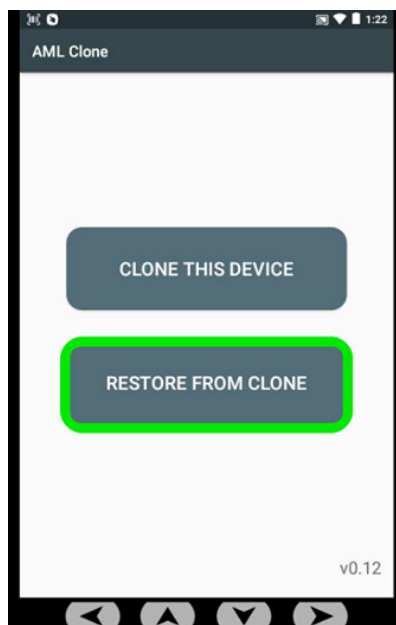
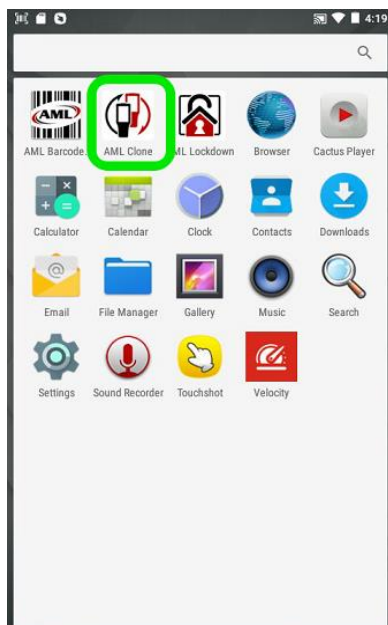
6.

Wait for cloning process to complete.



7. Cloning Another Scepter

- Place another Scepter in the charging cradle and open **AML Clone**.
- Choose **RESTORE FROM CLONE**.
- Tap **USB drive**.



8.

Tap the *.AMLClose* file, then **YES** to begin cloning.

(Note: the device will reboot upon completion).

