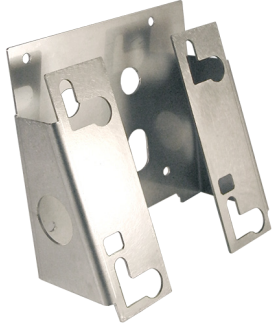


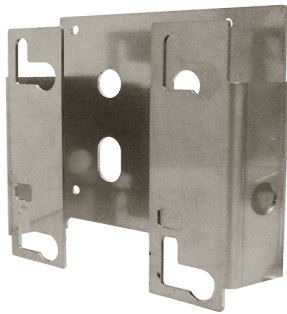
KDT3

Self-Service Kiosk Accessories



ACC-0759 Quick Mount Wall Bracket (Angled)

- Quickly mounts KDT3 to wall or flush surface
- 15° angle backwards tilt
- Bracket includes kiosk mounting hardware



ACC-0780 Quick Mount Wall Bracket (Straight)

- Quickly mounts KDT3 to a wall or flush surface
- Bracket includes kiosk mounting hardware



ACC-0761 Table Top Mount

- Ball and socket technology
- Infinite adjustment to achieve perfect viewing angles



PWR-8050 12V DC Adapter

- 12V DC Adapter required to power device if Power-over-Ethernet is not utilized.