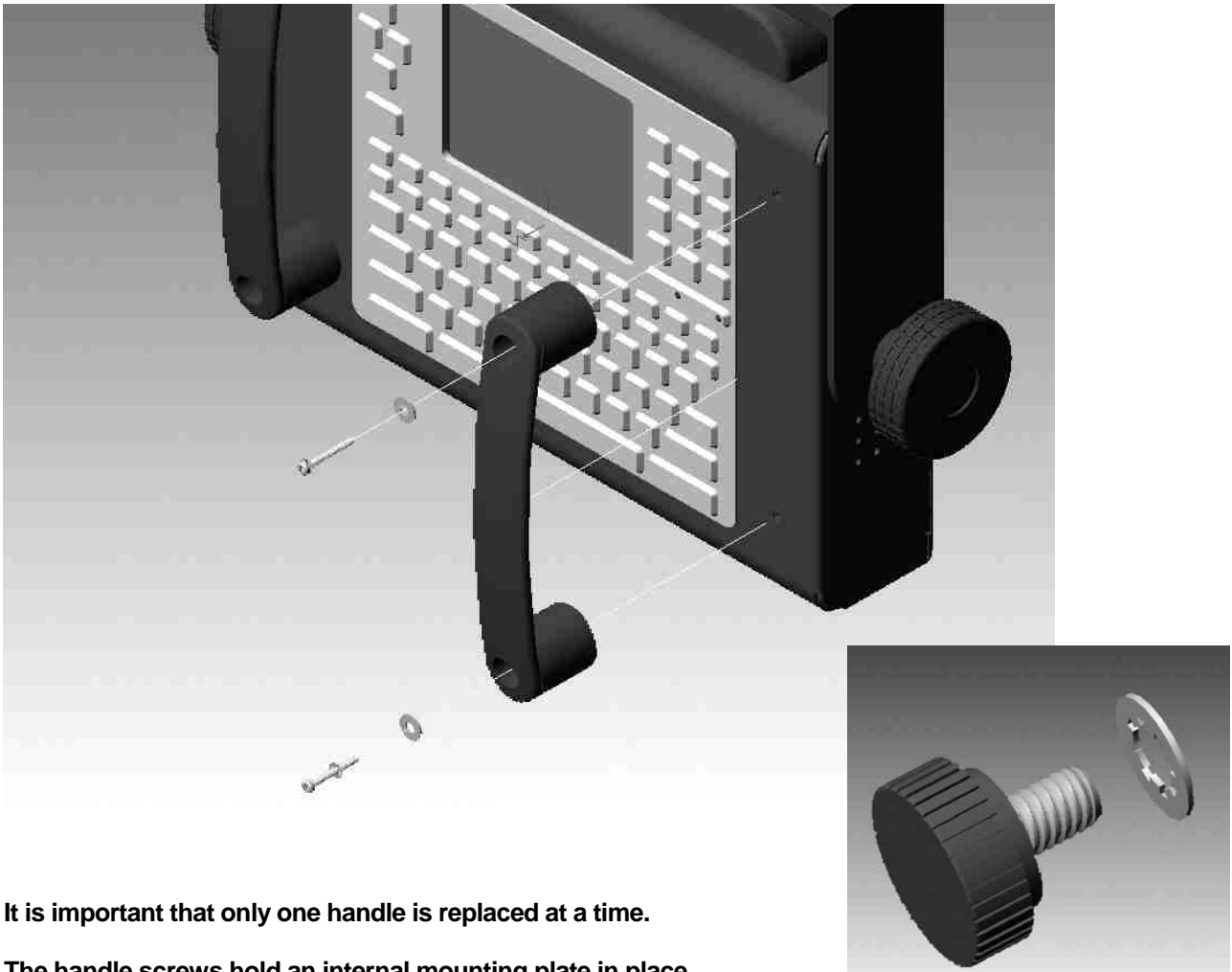




Removing the handles from the M7170 Vehicle Terminal

If you prefer to use the M7170 without the handles, they may be removed by following the procedure below.



It is important that only one handle is replaced at a time.

The handle screws hold an internal mounting plate in place.

Supplied with the M7170 are four special screws and lock washers that can be used in place of the handles.

The procedure for replacing the handles is to remove the decorative screw covers on the ends of the handles.

Then, using a Phillips screwdriver, remove the two screws holding the handle into place on the right side only.

Using the supplied special screws and lock washers, insert them into the two open holes.

Tighten securely but do not use pliers (the screw cap is plastic and it can break).

Once you have two of the special screws securely in place, you can remove the handle on the left side in the same manner, and replace it with the two remaining decorative screws and lock washers.